

Requirements

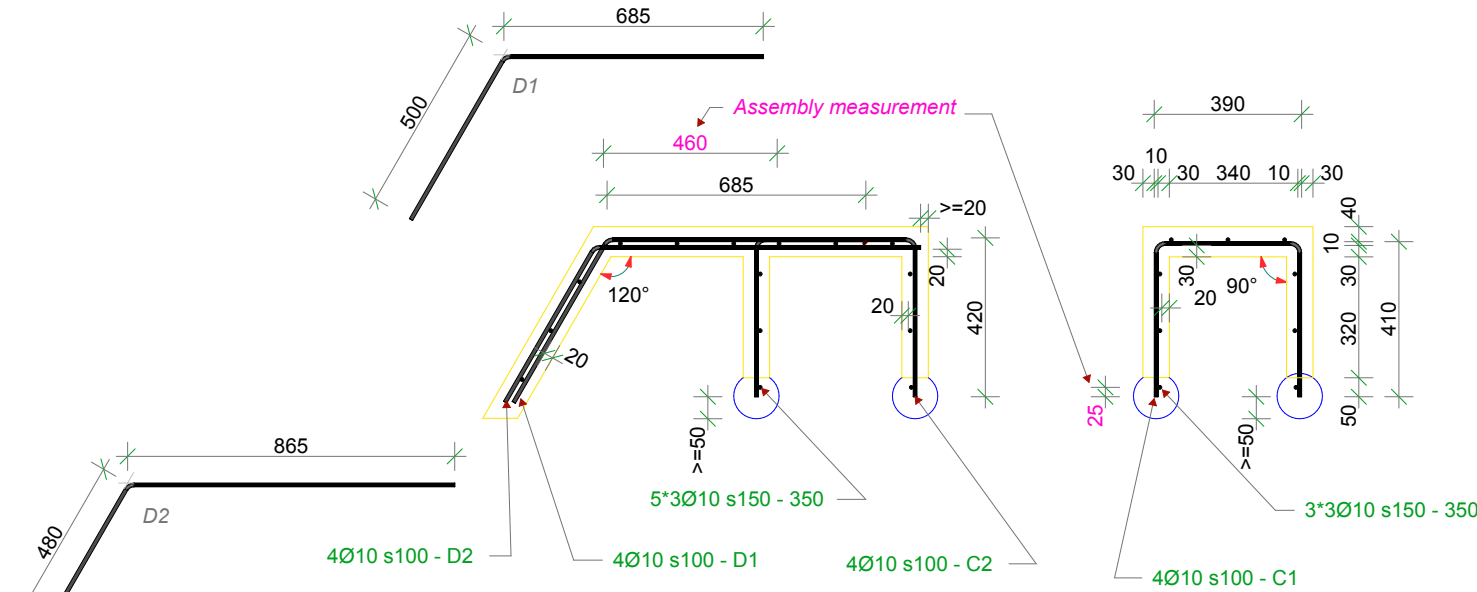
Reinforcement type; K500C-T

Tying is done by pliers

Concrete cover:
 - bottom reinforcement; 20mm
 - edges av bars; 20mm
 - at cylinders; >=50mm
 Suitable chairs should be used and will be placed inside

Reinforcement index should be provided with all necessary details

Measurements of D-bent bars illustrated as below

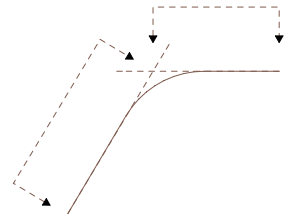


D2: a = 480
 b = 865
 v = 60°
 bending radius= 12mm

D1: a = 500
 b = 685
 v = 60°
 bending radius= 12mm

C2: a = 420
 b = 430
 c = 420
 bending radius= 12mm

C1: a = 410
 b = 390
 c = 410
 bending radius= 12mm



Skill name: CONCRETE CONSTRUCTION WORK	Drawn by: Vahik Bedrosian	Constructed by: Vahik Bedrosian
	Event: ES 2016 - GOTHENBURG	Scale: 1:20
Beskrivning: REINFORCEMENT	Drawing number: K - 40 - C03	IND